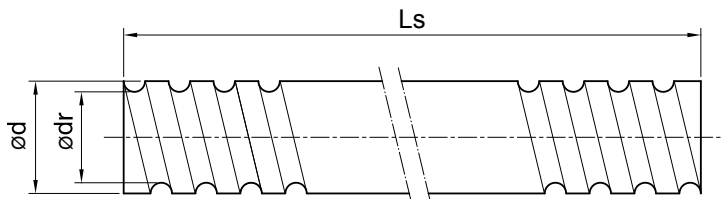


14.7 Types and Dimensions of Rolled Screw Shaft



Unit:mm

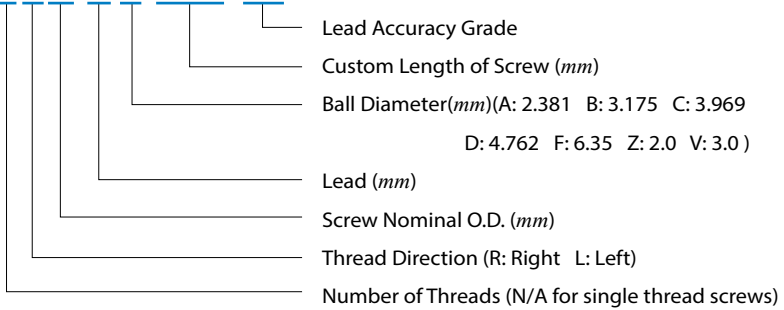
SCREW SIZE			Lead Accuracy Grade	Thread Direction	Number of Threads	Maximum Rolling Length	Screw Number
O.D.	LEAD	BALL DIA.		L: Left / R: Right			
12	4	2.381	C5,C7,C8,C10	R	1	1500	R1204A
	5	2.000		R	1		R1205Z
14	4	2.381		R	1	3000	R1404A
	5	3.175		R	1		R1405B
15	5	3		R	1	3000	R1505V
	10	3		R	2		2R1510V
	10	3.175		R	2		2R1510B
	16	3		R	2		2R1516V
16	4	2.381		R	1	3000	R1604A
	5	3.175		R	1		R1605B
	10	3.175		R	2		2R1610B
	16	3.175		R	2		2R1616B
20	4	2.381		R	1	3000	R2004A
	5	3.175		R	1		R2005B
	10	4.762		R	1		R2010D
	20	3.175		R	2		2R2020B

Unit:mm

SCREW SIZE			Lead Accuracy Grade	Thread Direction	Number of Threads	Maximum Rolling Length	Screw Number
O.D.	LEAD	BALL DIA.		L: Left / R: Right			
25	4	2.381	C5,C7,C8,C10	R	1	6000	R2504A
	5	3.175		R/L	1		R(L)2505B
	5.08	3.175		R/L	1		R(L)2515B
	10	3.175		R	2		2R2510B
	10	4.762		R	1		R2510D
	10	6.350		R	1		R2510F
	25	3.175		R	4		2R2525B
	25	3.969		R	4		4R2525C
28	5	3.175		R	1		R2805B
	6	3.175		R	1		R2806B
32	5	3.175		R/L	1		R(L)3205B
	5.08	3.175		R/L	1		R(L)3215B
	10	3.969		R	1		R3210C
	10	6.350		R	1		R3210F
	20	3.969		R	2		2R3220C
	20	6.350		R	2		2R3220F
	32	3.969		R	4		4R3232C
	32	4.762		R	4		4R3232D
36	10	6.350		R	1		R3610F
38	10	6.350		R	1		R3810F
	20	6.350	R	2	2R3820F		
	40	6.350	R	4	4R3840F		
			R	1	R4005B		
40	10	6.350	R	1	R4010F		
	20	6.350	R	2	2R4020F		
	40	6.350	R	4	4R4040F		
			R	1	R5010F		
50	10	6.350	R	1	R5010F		

Order Code:

4 R 15 10 A -1500 -C7



14.8 Nut Types of Rolled Ballscrew

Standard Models:

FSIN



FSIW



FSDN



FSKW



FSDW

